

# Shawano County Land Conservation Department



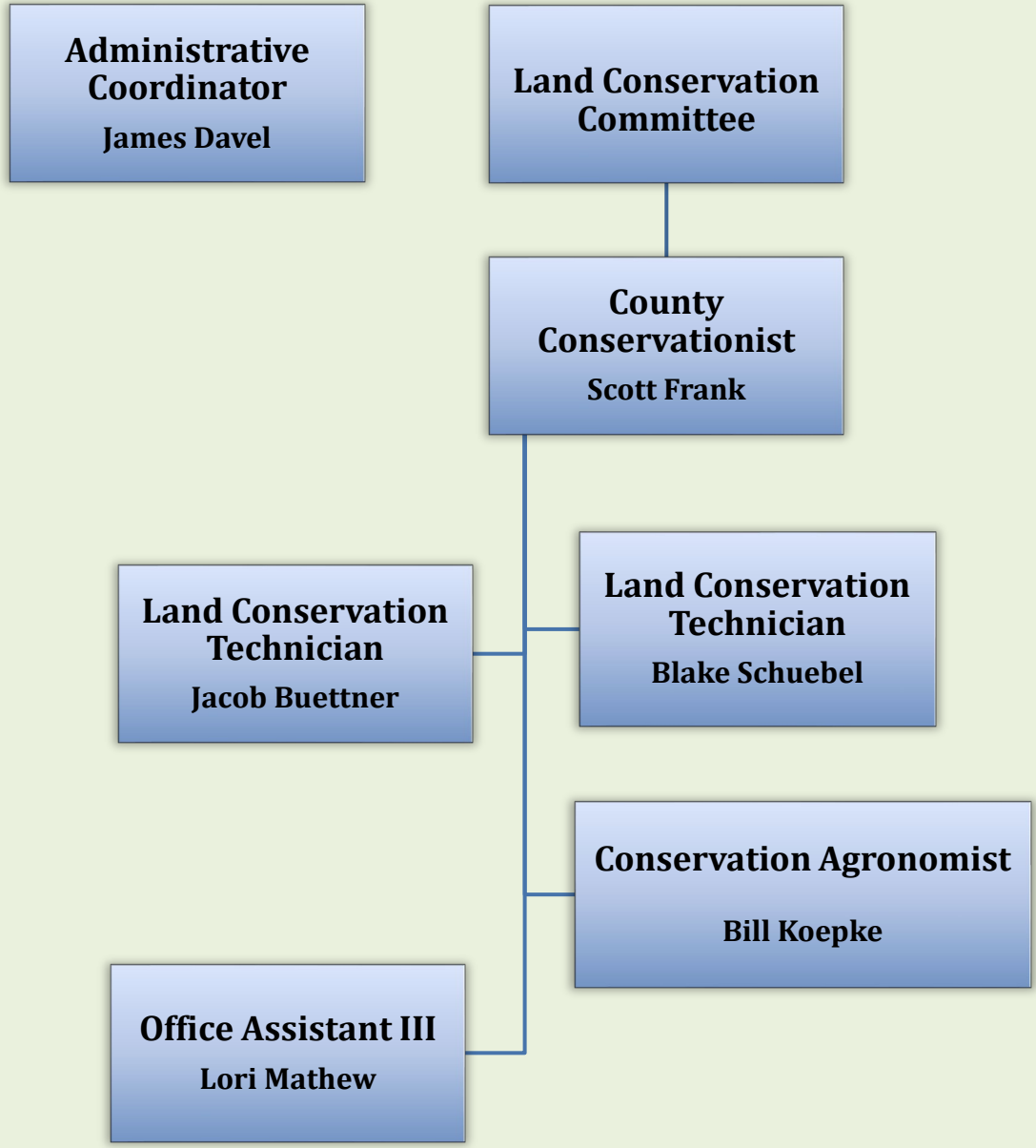
## Annual Report 2024

# Table of Contents

<b>ORGANIZATIONAL CHART .....</b>	<b>3</b>
<b>MISSION STATEMENT .....</b>	<b>4</b>
<b>SHAWANO COUNTY LAND CONSERVATION COMMITTEE (LCC) HISTORY.....</b>	<b>4</b>
COUNTY.....	5
COOPERATING AGENCIES.....	5
<b>LAND CONSERVATION COMMITTEE MEMBERSHIP ORGANIZATIONS .....</b>	<b>6</b>
<b>2024 ACCOMPLISHMENTS.....</b>	<b>6</b>
PROGRAM ADMINISTRATION.....	6
TECHNICAL ASSISTANCE .....	7
INFORMATION & EDUCATION.....	10
<b>CONSERVATION PRACTICES/ACTIVITIES IMPLEMENTED.....</b>	<b>13</b>
<b>LAND CONSERVATION GOALS AND OBJECTIVES.....</b>	<b>13</b>

**ORGANIZATIONAL CHART**

**Land Conservation Department**



## MISSION STATEMENT

To administer Shawano County's conservation programs and policies and provide technical assistance to help people conserve, improve and sustain our natural resources.



**OUR VISION:** A prosperous and productive community in harmony with a quality environment.

## SHAWANO COUNTY LAND CONSERVATION COMMITTEE (LCC) HISTORY

The Shawano County Land Conservation Committee (LCC) was originally organized by County Board resolution in April 1945, as the Soil and Water Conservation District, a special purpose unit of state government. Through a statewide reorganization, it became the Land Conservation Committee (LCC) of the County Board in June 1982. The LCC oversees the coordination of the county directed natural resource programs.

The staff members of the Land Conservation Department and the specialists and agents of the cooperating agencies provide technical, educational and financial assistance to landowners for planning, designing, installing, and maintaining conservation management systems and practices.

## **County**

### **(1) Land Conservation Department (LCD)**

- Provide technical, educational and financial assistance to landowners.
- Administer county and state land and water conservation programs.
- Administer county Livestock Waste Management Ordinance No. 3-06 and Livestock Facility Licensing Ordinance No. 1-18.

## **Cooperating Agencies**

### **(2) United States Department of Agriculture (USDA) - Natural Resources Conservation Service (NRCS)**

- Financial and technical assistance to landowners and units of government in development and implementing conservation plans and practices through various programs.

### **(3) USDA - Farm Services Agency (FSA)**

- Financial assistance to landowners to carry out conservation measures.

### **(4) University of Wisconsin-Extension (UWEX)**

- Educational assistance to individuals, groups and units of government relating to agriculture, resource conservation, youth development and community improvement.

### **(5) Wisconsin Department of Agriculture, Trade and Consumer Protection (DATCP)**

- Financial assistance for LCD staff and support.
- Financial assistance to landowners for soil and water conservation practices through implementation of county Land & Water Resource Management Plan.
- Working Lands Initiative comprised of the following programs: Farmland Preservation and Agricultural Enterprise Areas (AEA) provide income tax credits to those meeting eligibility requirements.
- Provides financial help and training to farmers, agronomists and agriculture educators to write Nutrient Management Plans.

### **(6) Wisconsin Department of Natural Resources (WDNR)**

- Technical and financial assistance with fishery, pond and stream management, agricultural runoff, forestry and wildlife work.

### **(7) USDA - Rural Development**

- Loans for farm ownership, conservation measures, private well replacement and sewer and water loans to municipalities.

## LAND CONSERVATION COMMITTEE MEMBERSHIP ORGANIZATIONS

To help further our mission and vision the LCC continued its membership with:

- (1) **Wisconsin Land and Water Conservation Association, Inc.**
  - Supports the efforts of county LCC's and staff.
  - Provides training, coordinates development of conservation standards, promotes youth education, builds partnerships and advocates for its members.
- (2) **Lake Michigan Area Land & Water Conservation Association**
  - Made up of nine counties (Marinette, Oconto, Menominee, Shawano, Brown, Door, Kewaunee, Manitowoc, Sheboygan) in Northeast Wisconsin.
  - Promotes collaboration to further the common interests of county conservation programs in the area.
  - Elect area representatives to the Wisconsin Land & Water Conservation Board of Directors.
- (3) **Lumberjack Resource Conservation & Development Council, Inc.**
  - Identifying needs within their communities and working with local citizens, organizations, groups and agencies to create workable solutions.
  - Four Focus Areas: Land Conservation, Water Management, Community Development, and Land Management.
- (4) **Timberland Invasives Partnership**
  - Cooperative relationship for effective implementation of terrestrial invasive species management in Langlade, Menominee, Oconto, and Shawano counties and the Menominee Nation and Stockbridge-Munsee Community.

## 2024 ACCOMPLISHMENTS

### **Program Administration**

- Partnered with Fox-Wolf Watershed Alliance to implement a Climate Smart Agronomy grant launched under U.S. Department of Agriculture.
- Administered and utilized state cost-share funds provided under **Chapter 92 - Soil and Water Conservation and Animal Waste Management** for technical and administrative work.
- Continued implementation of the **Shawano County Land & Water Resource Management Plan** which guides the direction of conservation programs and makes the County eligible for grant funds to carry out the work.

- Administered the county **Livestock Waste Management Ordinance**. Reviewed and approved applications and plans for 15 livestock waste management permits including waste storage, waste transfer and waste storage closure.
- Administered the county **Livestock Facility Licensing Ordinance**. Reviewed and approved applications for four new licenses and three license modifications.
- Continued annual on-farm reviews (34 site visits) of compliance with soil & water conservation standards for landowners participating in the **Farmland Preservation Program (FPP)**. Issued 185 Certificates of Compliance to landowners in order for them to claim the state income tax credits.
- County tax levy funding of \$5,000 was budgeted for 2024 to continue the **Shawano County Shoreland Restoration Program** which promotes the benefits of restoring shorelines to a more natural state. Eligible projects are cost shared at 50% (maximum cost share of \$2,500) to help reduce pollutants from entering the lakes and improve habitat.
- Continued the transition of work, activities and funding of the WDNR Surface Water Grant for **Lake Monitoring and Protection Network** program to our partner, Waterways Association of Menominee and Shawano Counties, Inc. (WAMSCO).
- Developed the **2024 Work Plan and Soil & Water Resource Management Grant** request to WI DATCP to continue support of the County's conservation programs.
- Continued partnership with USDA-NRCS, Waupaca County and Oconto County to promote the **Upper Fox/Wolf and Green Bay West Shore Demonstration Farm Networks** in Shawano County. Multiple field days were held in both watersheds to showcase soil and water conservation practices.
- In partnership with Fox-Wolf Watershed Alliance we continued helping with a multi-county implementation of the **Back 40 Soil Health Challenge**. It is for farmers interested in exploring the benefits of improving soil health through cover crop and no-till on a limited number of acres. In Shawano County, five farmers participated in 2024. (Doug Breyer, Mark Maus, Dave Race, Grant Riesenberg and Nick Ullmer)

### **Technical Assistance**

- Worked with USDA's Natural Resources Conservation Service and **received engineering approvals** for multiple conservation practice design plans.
- Administered and provided technical assistance for the **Wildlife Damage, Abatement and Claims Program** in Shawano County. The LCC approved one damage claim for crop loss. Hunters donated 17 deer that resulted in 586 lbs. of venison distributed to local charitable organizations. Expenses are reimbursed by the WI Department of Natural Resources.

- Provided **technical and financial assistance** to county residents for planning, surveying, design, layout and installation of soil and water conservation practices. Projects included:

- **Shoreline restoration** at Tilleda Falls Campground. Project was cost shared with a WI DNR Surface water grant. This shoreline restoration consisted of 225 feet of shoreline being restored with roughly 1,100 plants installed in and around bags.



- **Harvestable Buffers** at Scott Martin's farm (Town of Maple Grove). Project was cost shared with a funds through the WI DNR's Multi-Discharger Variance Program.



*These buffers are a minimum of 30' wide along both sides of a drainage way*

- **Waste storage system closures**. There were two projects completed and cost shared at 70% with Soil & Water Resource Management grant funding from WI DATCP.

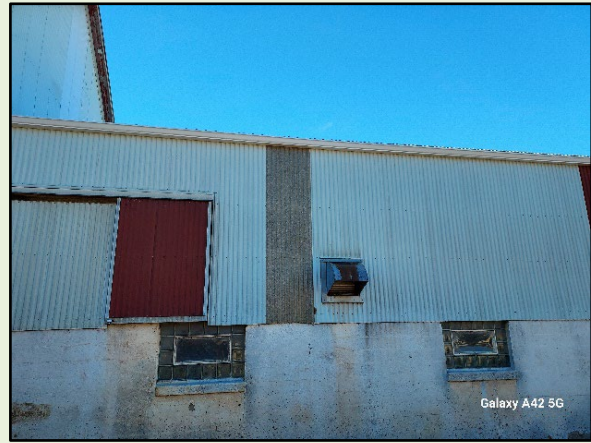
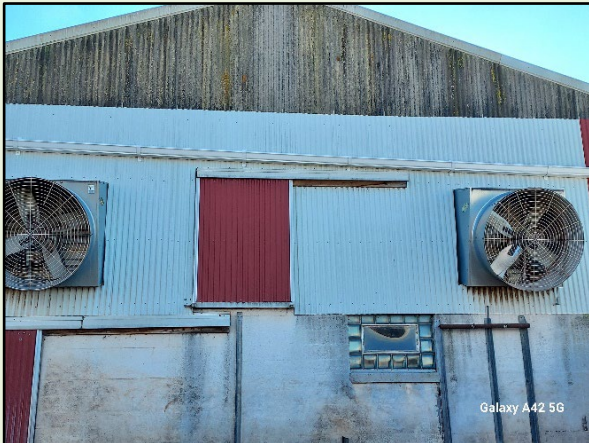


*Removal of waste and stained soils as well as breaking up the concrete are part of the process of the closure of waste storage systems. The pictures above show a before and completed project at Steve Onesti's farm in the Township of Almon.*

- Completed three conservation practices for Brent and Kaitlin Bricco in the Town of Grant consisting of a waste storage closure, roof runoff system and grassed waterway that received cost share funding through WI DNR's **Notice of Discharge Grant program.**



Waste storage closure



Roof runoff system





Grassed waterway

### **Information & Education**

- Our 3<sup>rd</sup> annual **Youth Conservation Field Day at Wilson Creek Orchard** (near Wittenberg) was a huge success. There were approximately 200 5<sup>th</sup> grade students from Wittenberg, Birnamwood, Bowler, Marion, Menominee and Tigerton schools who enjoyed being in the outdoors and experiencing 9 stations filled with information and activities related to conservation and preservation. There were numerous donations and grants to make this event possible.



- Our 11<sup>th</sup> annual **Youth Conservation Field Day at Navarino Nature Center** was a great event. There were approximately 225 5<sup>th</sup> grade students from Olga Brenner, Gresham, Sacred Heart, St. James and St. Paul schools who enjoyed being in the outdoors and experiencing 9 stations filled with information and activities related to conservation and preservation. There were numerous donations and grants to make this event possible.



- In partnership with the National Association of Conservation Districts and our WI Land+Water Conservation Association, the LCD coordinated a local competition for the **Youth Conservation Awareness Poster Contest**.
  - The 2024 theme was “May The Forest Be With You Always.” There were 208 students from Bonduel, Bowler, Sacred Heart Catholic, St. James Lutheran, Shawano and Wittenberg schools that participated. Our local competition was held in January 2024. First place posters advanced to Lake Michigan Area in February. First place posters at the Lake Michigan Area advanced to the State Contest held in March. Those that placed at the various levels are shown below while being recognized at the Shawano County Board meeting on March 27.



- In partnership with WI DATCP and UWEX, we continued our 12<sup>th</sup> annual **Nutrient Management Farmer Training Program** in the County with our workshop on Dec. 16 to help farmers become more aware of the value of proper management of legumes and manure as fertilizer and be certified to write their own Nutrient Management Plans.



- Continued to be an **active member of the state and area associations of Land Conservation Committees and Departments** including Wisconsin Land+Water Conservation Association, Lake Michigan Area Land and Water Conservation Association and Lumberjack Resource Conservation and Development Council, Inc.
- Coordinated and hosted an annual **Conservation Partners – Soil & Water Conservation Tour** on August 1 in eastern Shawano County to showcase multiple efforts by landowners to restore, protect and enhance our natural resources. Tour stops included the Waterways Association of Menominee and Shawano Counties, Wayne & Connie Nischke and Wagner Farms, Inc.

**Shawano County Conservation Partners  
Soil & Water Conservation Tour  
August 1, 2024**

WAMSCO @ Shawano County Chamber of Commerce Office

Wagner Farms, Inc.

Wayne & Connie Nischke

Lunch at Pulcifer Park

- Continued activities of the **Shawano County Invasive Species Strategic Management Plan**, with project partners Waterways Association of Menominee and Shawano Counties (WAMSCO), Timberland Invasives Partnership and WI DNR.

**CONSERVATION PRACTICES/ACTIVITIES IMPLEMENTED**

<b>Cost-Share Funding</b> WI DATCP . . . . . \$49,251 WI DNR . . . . . \$41,786 FWWA* . . . . . \$29,486 Multi-Discharger Variance . . \$26,670 County . . . . . \$1,502	<b>Farmland Preservation Program</b> (On farm compliance reviews) . . . 34 (Certificates of Compliance issued) . 54 (Landowners in compliance) . . . 185
<b>Nutrient Management Plans</b> (Acres reported) . . . . . 96,390	<b>Shoreland Restoration (2 sites)</b> . . . 243 lin ft . . . 1,098 sq ft
<b>Tree Planting Program (DNR coordination)</b> Trees planted (private lands). . . 83,900 Trees planted (state lands) . . . . 1,100 Planting machine rentals . . . . . 3 Planting bar rentals . . . . . 4	<b>Livestock Waste Management Ordinance</b> (Permits Issued) . . . . . 15 <b>Livestock Facilities Licensing Ordinance</b> (Applications Received) . . . . . 7 (Licenses Approved) . . . . . 4 (Licenses Modified) . . . . . 3
Waste Storage Facility . . . . . 6 Waste Transfer Systems . . . . . 11 Waste Storage Closure . . . . . 2	<b>Wildlife Damage Abatement &amp; Claims Program</b> (Landowners Assisted) . . . . . 14 Landowners Granted Shooting Permits (By DNR) . . . . . Geese 1; Deer 8 Hunt for the Hungry (Deer donated and processed) . . . 17
*Fox-Wolf Watershed Alliance (FWWA)	

**LAND CONSERVATION GOALS AND OBJECTIVES**

		<i>YEAR(s)</i>
1.	To secure funding from WI DNR, WI DATCP and NRCS for cost sharing and technical assistance to assist landowners implement soil & water conservation best management practices while meeting federal, state and county standards.	2024
2.	Implementation of long-term strategies of the Shawano County Land & Water Resource Management Plan.	2016 - 2026
3.	To continue assisting landowners through the Farmland Preservation Program’s conservation compliance provisions.	2024
4.	Continue implementation of the Shawano County Forest Stewardship Management Plan.	2013-2037
5.	Implement an effective education, monitoring and prevention program for invasive species (IS) that will provide best management practices for long term natural resource benefits.	2024