

W7300

W6900

W6500

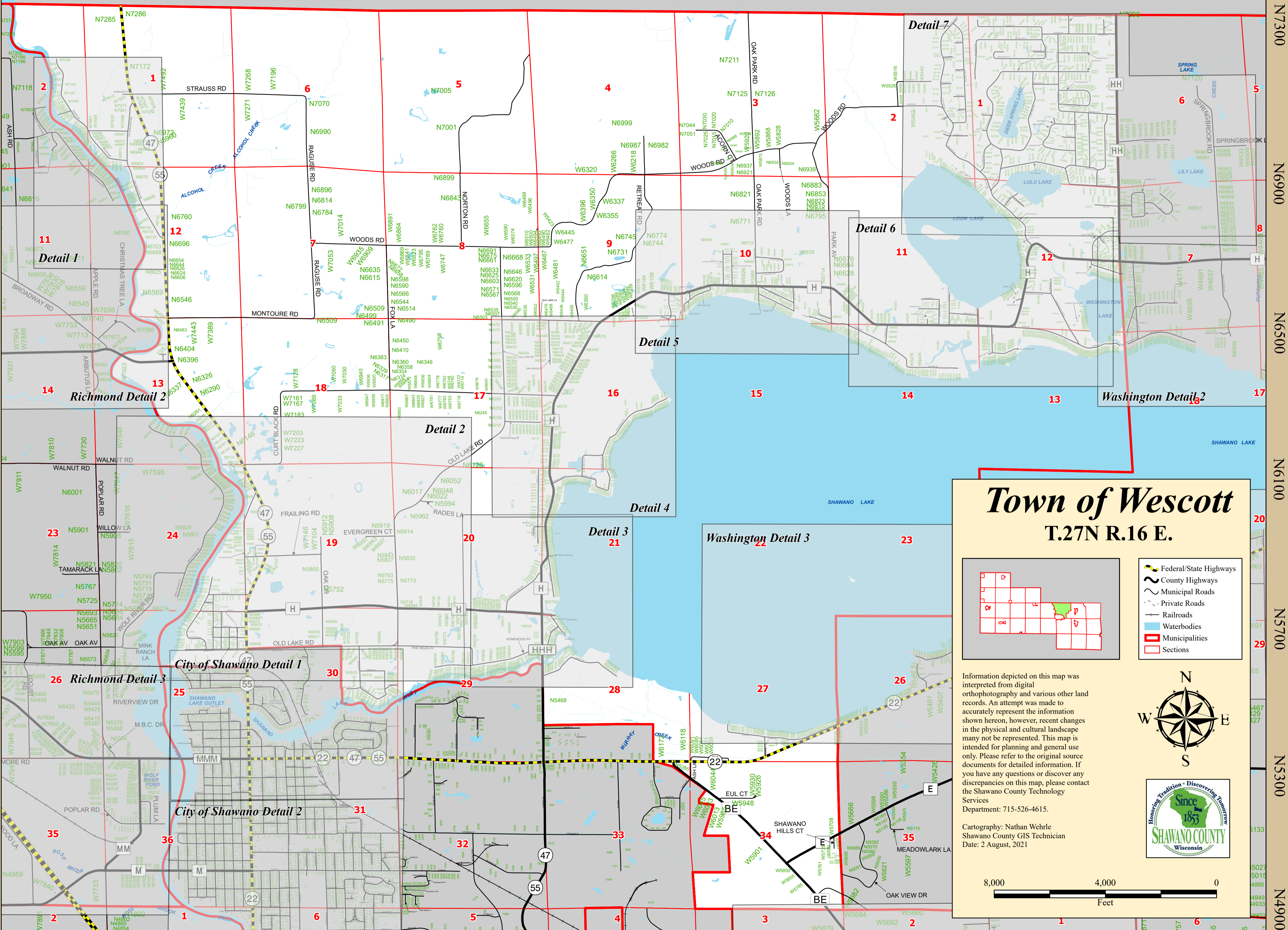
W6100

W5700

W5300

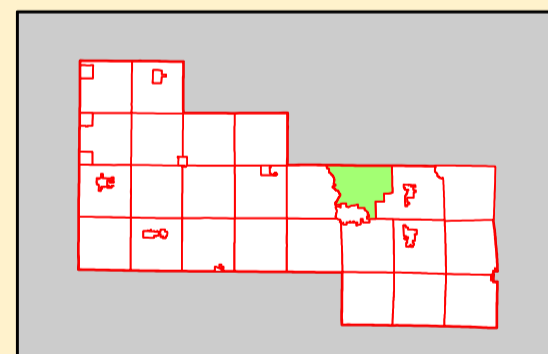
W4900

N7300  
N6900  
N6500  
N6100  
N5700  
N5300  
N4900

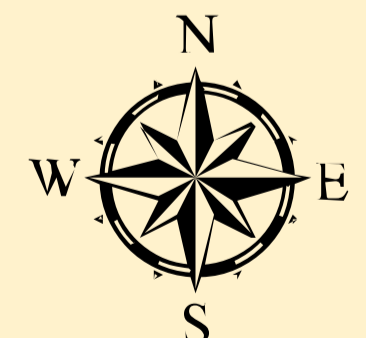


# Town of Wescott

## T.27N R.16 E.



- Federal/State Highways
- County Highways
- Municipal Roads
- Private Roads
- Railroads
- Waterbodies
- Municipalities
- Sections



Information depicted on this map was interpreted from digital orthophotography and various other land records. An attempt was made to accurately represent the information shown hereon, however, recent changes in the physical and cultural landscape many not be represented. This map is intended for planning and general use only. Please refer to the original source documents for detailed information. If you have any questions or discover any discrepancies on this map, please contact the Shawano County Technology Services Department: 715-526-4615.



Cartography: Nathan Wehrle  
Shawano County GIS Technician  
Date: 2 August, 2021

