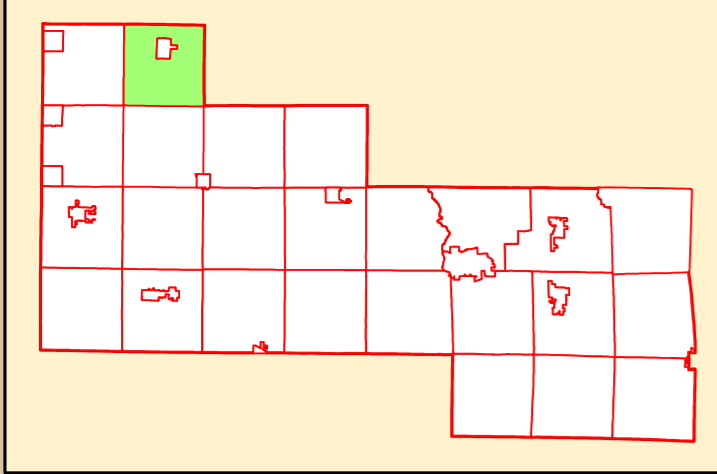


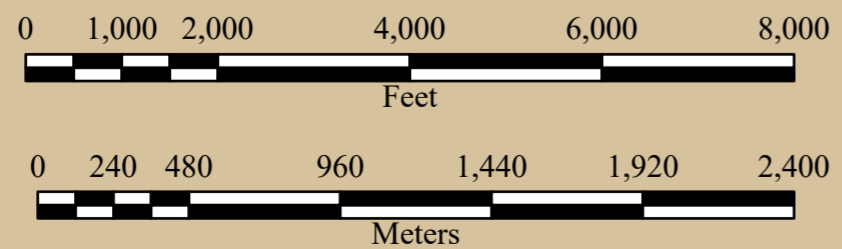
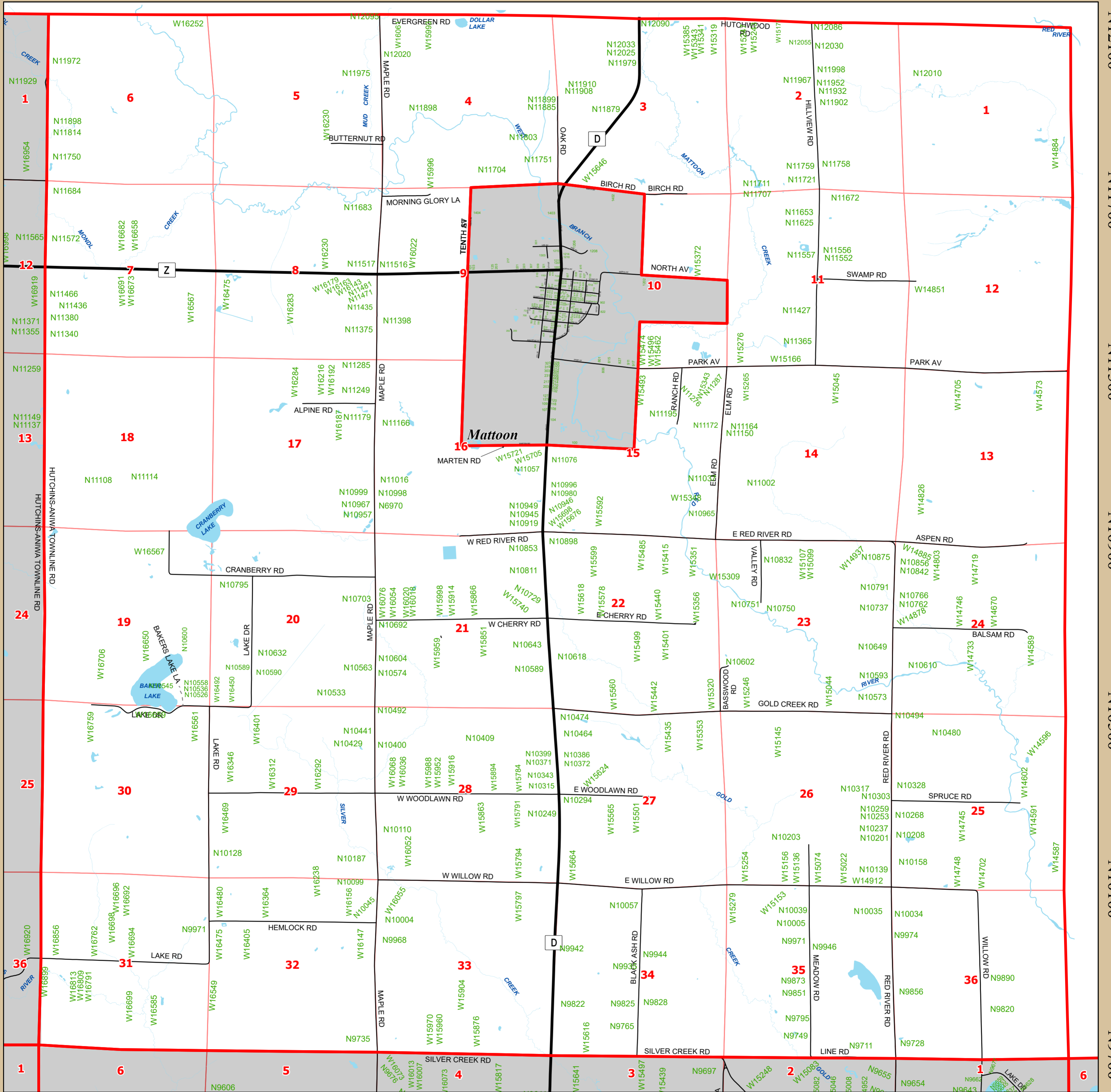
Town of Hutchins

T.29 N R.12 E.



- Federal/State Highways
- County Highways
- Municipal Roads
- Private Roads
- Railroads
- Waterbodies
- Municipalities
- Sections

W16900 W16500 W16100 W15700 W15300 W14900 W14500



Information depicted on this map was interpreted from digital orthophotography and various other land records. An attempt was made to accurately represent the information shown hereon, however, recent changes in the physical and cultural landscape many not be represented. This map is intended for planning and general use only. Please refer to the original source documents for detailed information. If you have any questions or discover any discrepancies on this map, please contact the Shawano County Technology Services Department: 715-526-4615.

Cartography: Nathan Wehrle
Shawano County GIS Technician
Date: 6 August, 2021



Town of Hutchins